

GE Healthcare



Vivid S6

Cardiovascular ultrasound system



Taking care of **everyone.**

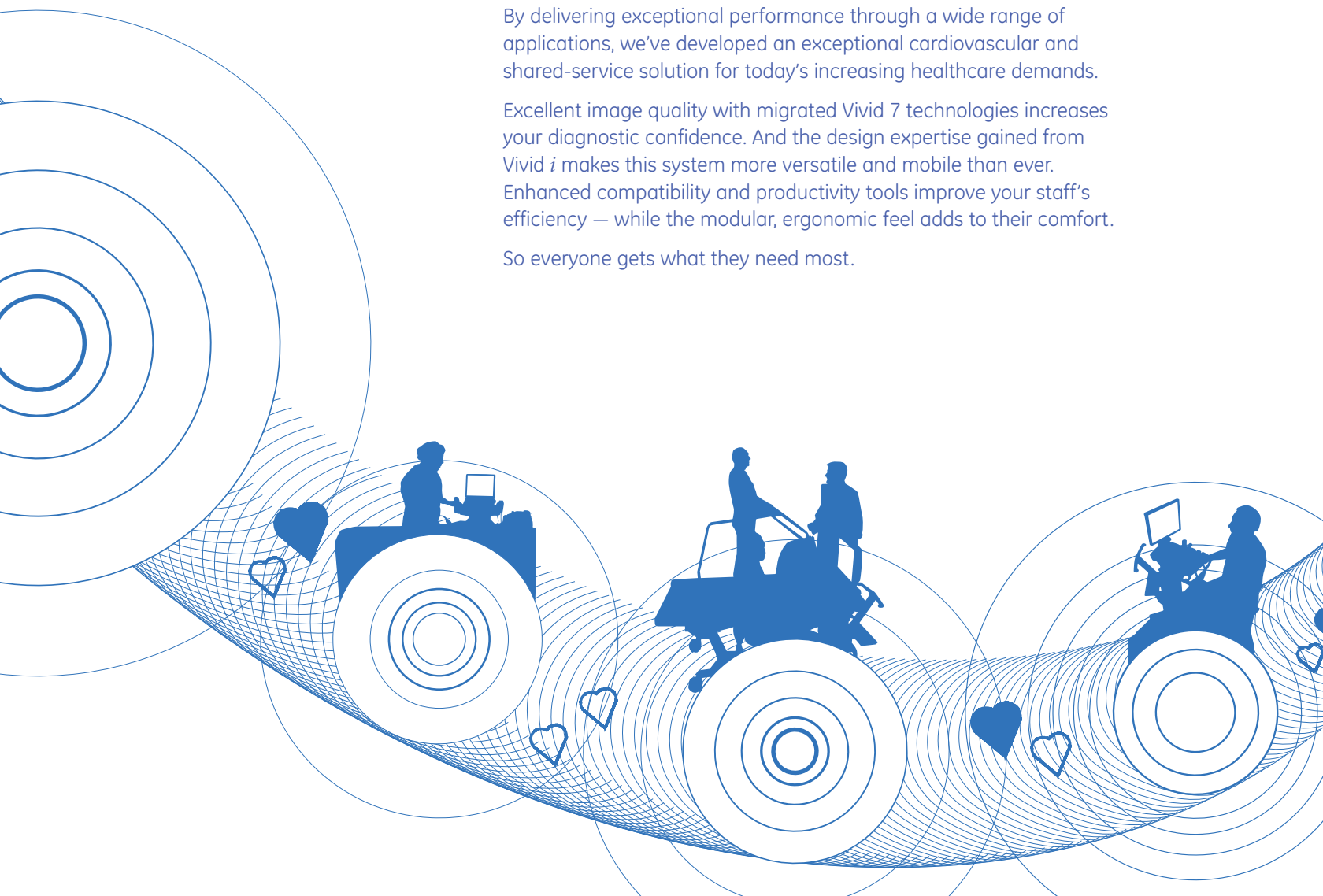


Strong performance and innovative miniaturization make the Vivid S6 a highly desirable system for a variety of clinical settings.

Versatile. Talented. Attractive. That's the Vivid™ S6 from GE Healthcare. By delivering exceptional performance through a wide range of applications, we've developed an exceptional cardiovascular and shared-service solution for today's increasing healthcare demands.

Excellent image quality with migrated Vivid 7 technologies increases your diagnostic confidence. And the design expertise gained from Vivid *i* makes this system more versatile and mobile than ever. Enhanced compatibility and productivity tools improve your staff's efficiency – while the modular, ergonomic feel adds to their comfort.

So everyone gets what they need most.



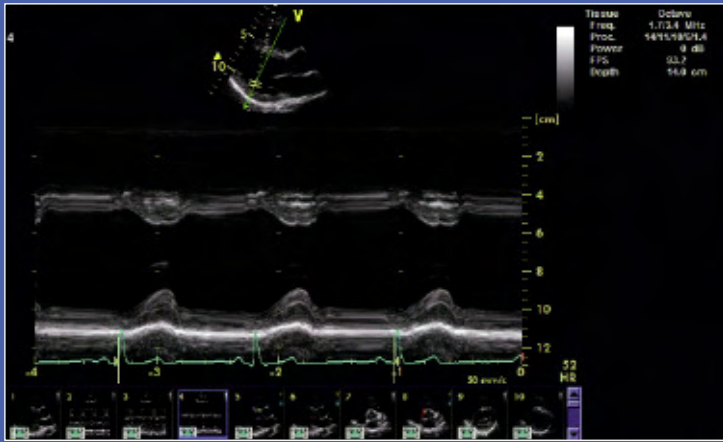


Get to the heart of it.

Premium cardiac performance. Excellent image quality. Plus, accurate information and detailed analysis reporting. All the vital signs of a great cardiovascular system.

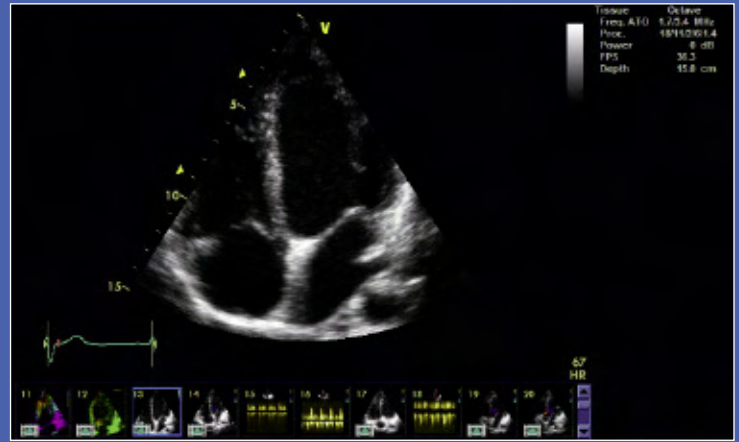
Additional features

The Vivid S6 offers ultra-high frame rates, dual focus, Speckle Reduction Imaging and Coded Phased Inversion Harmonics — all to simplify image acquisition and greatly enhance image quality.



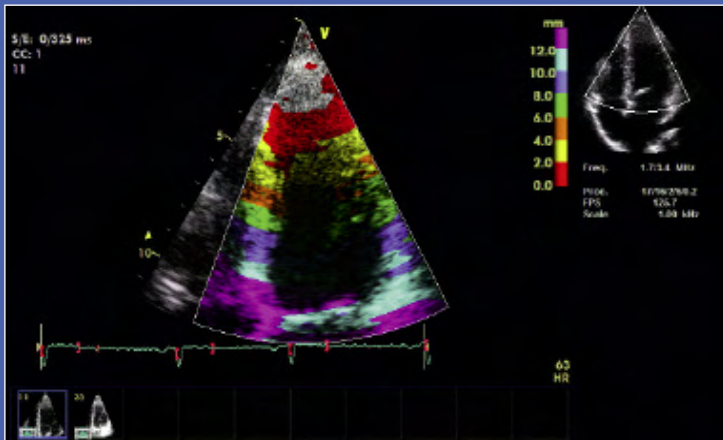
Anatomical M-Mode

The Anatomical M-Mode option allows correct measurements in non-standard planes.



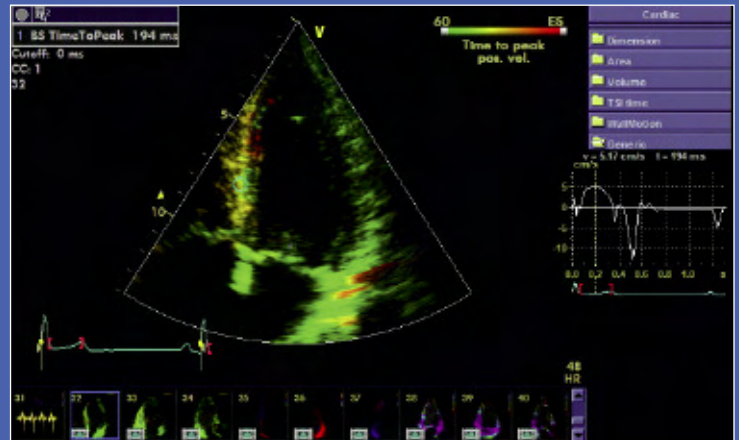
ATO/ASO

Automatic Tissue and Automatic Spectrum Optimization are well within reach with the touch of a button.



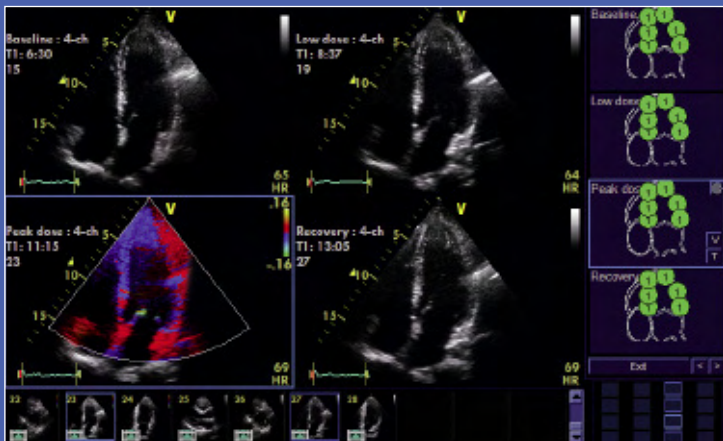
TT

Tissue Tracking (TT) provides easy recognition of global and regional left ventricular wall motion abnormalities.



TSI

Advanced Tissue Synchronization Imaging (TSI) quantifies LV synchronicity information. Time-to-peak data is visualized in a simple to read, red-yellow-green functional image.



SmartStress

Our SmartStress package takes the stress out of stress echo.



LVO Contrast*

Get enhanced visualization of the LV border for diagnosing abnormalities — plus wall-motion analysis and ejection fraction calculations.

*All contrast agents should be used as described on the label by the contrast agent manufacturers.



Wait. There's more.

The Vivid S6 adds a broad range of shared-service capabilities to its impressive imaging portfolio — including vascular, abdominal, pediatric/fetal, OB and OR applications.

- Additional applications, such as Vascular/Abdominal Contrast,* Wide Aperture and LOGIQView options, help stretch your ultrasound benefits even further.
- Multiple-angle compound imaging enhances border definition, reduces acoustic artifacts and improves contrast resolution.
- Usability is extended with our OB package, and pediatric/fetal applications.
- Blood Flow Imaging (BFI) gives you a better understanding and delineation of directional blood flow in vessels.
- IMT measuring technology dramatically reduces the time taken to perform the carotid artery's intima-media thickness measurements.



*See back cover for additional information.



Bring your patients into



focus.

Intelligent design and easy-to-use features allow you to concentrate more on the patient and less on the system.

Excellent image quality, accurate information and detailed analysis reporting take workflow, productivity and patient care to the next level.

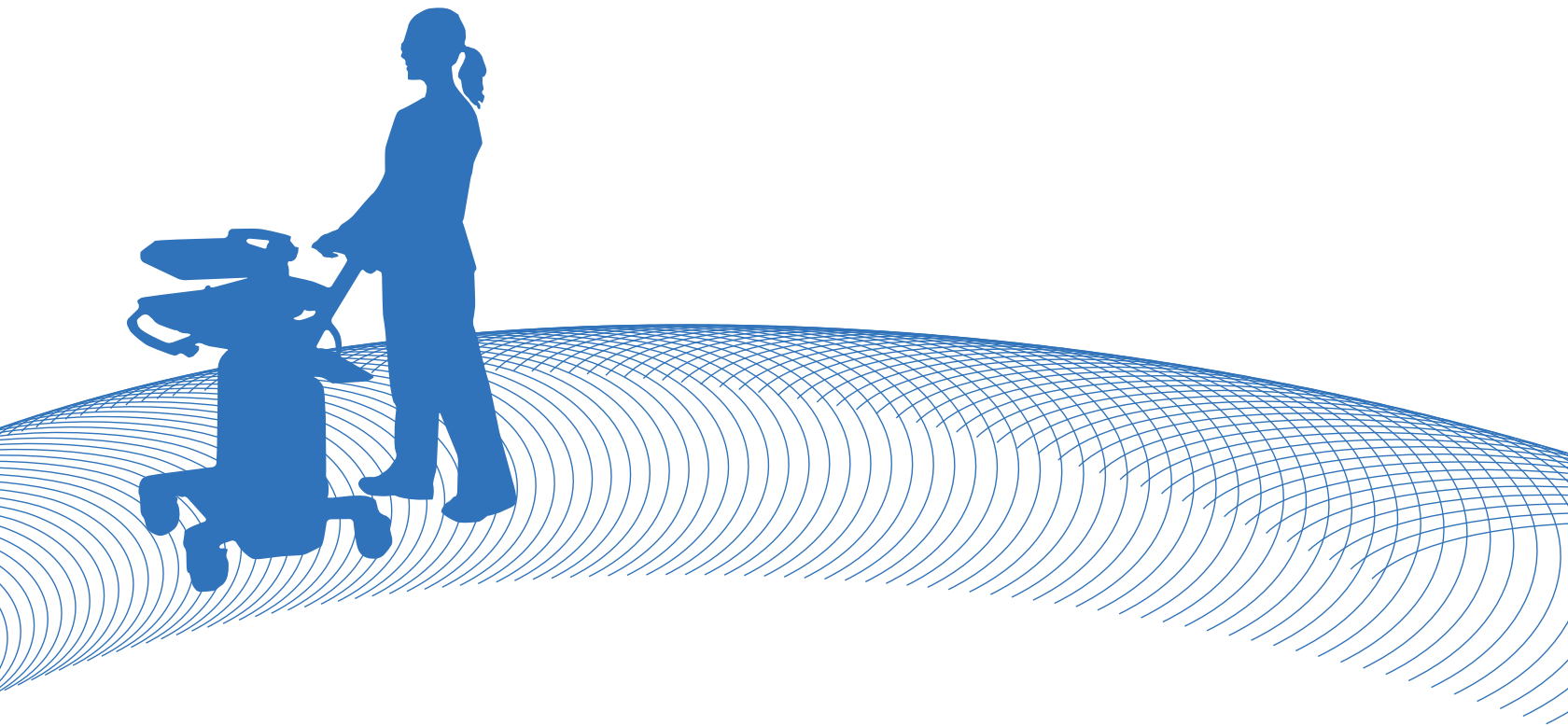
Smart Depth

By adding Smart Depth in 2D and color mode, the Vivid S6 automatically changes the frequency, focus position and transmit pattern as the user changes depth. This ensures the highest resolution at shallow depths and optimal penetration at greater depths. Vital for scanning children, it helps newer staff see better results and expert operators save time — increasing standardization among users.

Advanced features come standard

Your image quality remains protected with our raw-data storage. EchoPAC™ allows instant access to ultrasound raw data provided by the Vivid S6 for comprehensive review, analysis and post-processing capabilities. Through enhanced connectivity and media support, data is shared more smoothly within networks. The “Flex” key, next to the trackball on the keyboard, can be assigned to assume the function of more distant keys, for minimal effort, increased speed, and ease of use. The large 17” high contrast wide-angle display adjusts automatically to the ambient light, preserving optimal image quality presentation under varying conditions. An Uninterruptible Power Supply and multiple probe options add to the Vivid S6’s usability.





At your convenience.

Fits in tight spaces with the performance you'd expect from a larger console. Vivid S6 puts you in a very comfortable position.

The new ergonomic design of the Vivid S6 can reduce fatigue and discomfort, and promote efficiency and well-being while performing mobile studies. Our "Flex-Fit" mechanism (up and in, down and out) enables continuous pivoting height adjustment of the control panel, while keeping optimal distance from the user and leaving just the right legroom for standing or sitting positions. And the horizontally swiveling keyboard is always within easy reach for quick operation.

The low weight and size, and the fold down mechanism of the display, allow easy movement. With its greater mobility and innovative design, the Vivid S6 supports improved health for both patients and staff. That's a nice place to be in.



©2008 General Electric Company – All rights reserved.

GE Medical Systems Ultrasound & Primary Care Diagnostics, LLC,
a General Electric company, doing business as GE Healthcare.

General Electric Company reserves the right to make changes in specifications and features shown herein, or discontinue the product described at any time without notice or obligation. Contact your GE representative for the most current information.

GE, GE Monogram, Vivid and EchoPAC are trademarks of General Electric Company.

*GE Healthcare's Vivid S6 is designed for compatibility with commercially available contrast agents. Because the availability of these agents is subject to government regulation and approval, product features intended for use with these agents may not be commercially marketed nor made available before the contrast agent is approved for use. Advanced contrast features are only enabled on systems for delivery in countries or regions where the agents are approved for use or for investigational or research use.

Healthcare Re-imagined

GE is dedicated to helping you transform healthcare delivery by driving critical breakthroughs in biology and technology. Our expertise in medical imaging and information technologies, medical diagnostics, patient monitoring systems, drug discovery, and biopharmaceutical manufacturing technologies is enabling healthcare professionals around the world to discover new ways to predict, diagnose and treat disease earlier. We call this model of care "Early Health." The goal: to help clinicians detect disease earlier, access more information and intervene earlier with more targeted treatments, so they can help their patients live their lives to the fullest. Re-think, Re-discover, Re-invent, Re-imagine.

GE Healthcare
9900 Innovation Drive
Wauwatosa, WI 53226
U.S.A.

www.gehealthcare.com



GE imagination at work